

Installation instruction for Carplay Android Auto interface



LEXUS NX200T / NX300H 2015-2020

The interface is connected via two connection plugs on the radio and one video cable on the display. It is estimated to take 30-60 minutes of work to connect the interface. No programming required.

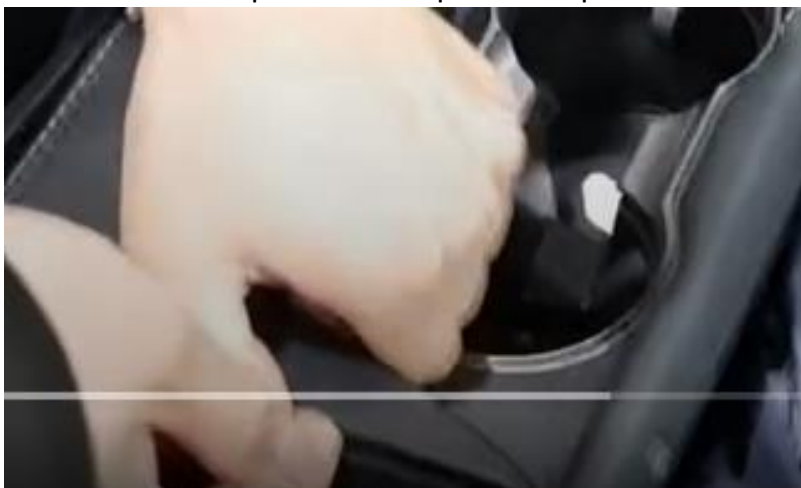
Step 1. Turn the knob of the gear lever (loosen)

Pull down the gear lever cover and turn off the knob. Place a towel over the pin to protect other parts.



Step 2. Remove parts of the center console (unclip)

Pull the cover strip near the cup holder up and off.



Step 3. Remove parts of the center console (unclip)

Pull the cover next to the cup holder off and unhook.



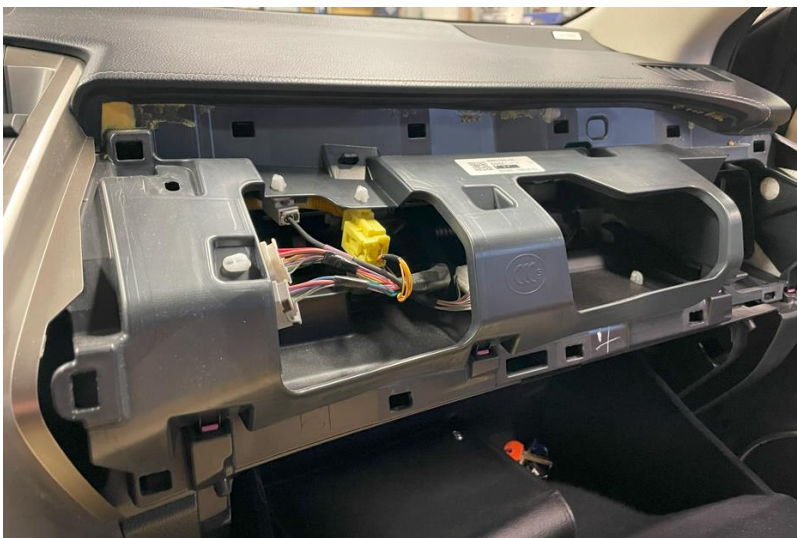
Step 4. Remove both center console panels (screws)

Unscrew the panels on both sides of the center console (2 screws on each side). Place the panels in a safe place. When replacing the panels, take into account the position of the clips.





Step 5. Remove the front panel on the right (unclip)
Pull the front panel up and off at the co-passenger's position.



Step 6. Remove panel to the left of the trim (detach)

Unclip the panel to the left of the radio console. Use auxiliary tools if necessary. The panel is secured with clips.



Step 7. Remove screen panel (click off)

Peel off the panel in front of the display by pulling it up and forward.



Step 8. Remove the trim (unclip)

Peel off the trim around the radio and display. This is attached in different positions with clips.



Step 9. Remove the control console from the climate control unit (unclip)

Pull the climate control console forwards and loosen and unplug it. Place the console in a safe place.



Step 10. Detach the center console (unclip)

Make room to slide the radio forward by pulling the center console off. Leave the panel hanging on the side of the center console. The plugs can be left in place.



Step 11. Detach the radio (screws)

There is a 10 mm bolt on the left and right. Loosen these bolts. Put the gear in reverse and pull the radio all the way forward.

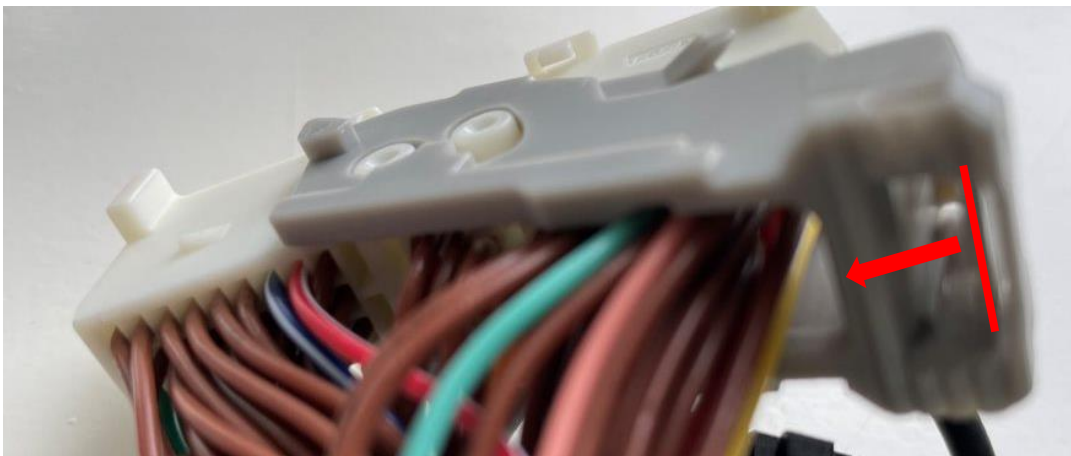
Step 12. Remove the display (screws)

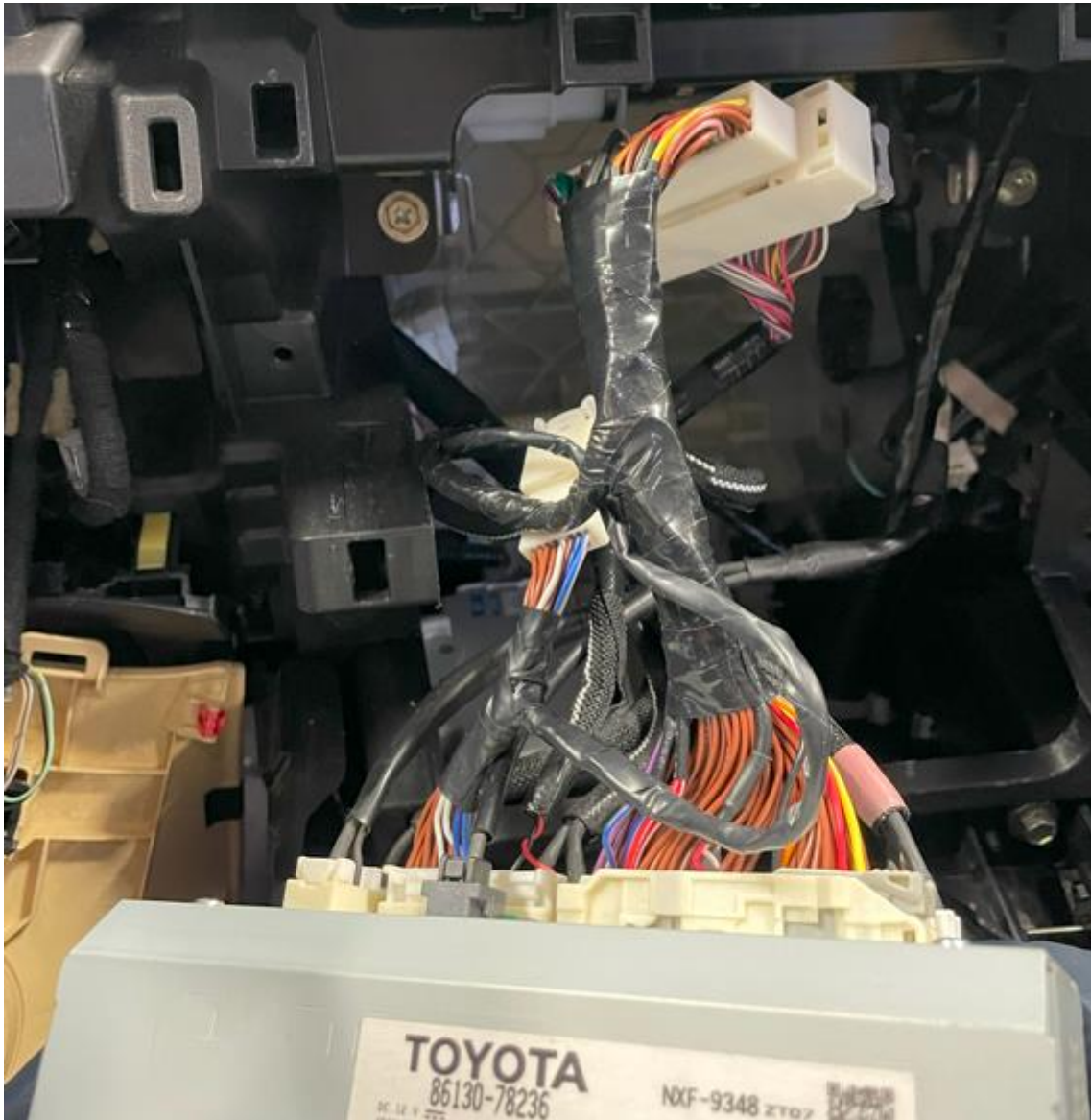
Remove the two 10mm nuts. Peel off the display and lay it down in such a way that it will not damage the display.



Step 13. Connect the plugs to radio and display (plugs)

Connect the large and small plugs of the interface. Press the clip of the grey part to release the large plug (see illustration). Transfer the two plugs that are released to the sockets.





Swap the monitor's blue video plug for the new plug, and then connect the old plug to the new socket. Route the cables to the right compartment.

Step 14. Connect the interface (plugs)

Connect the antenna, connection plug, video plug, microphone plug, and any USB extension cables to the interface.

Step 15. Test the system

Plug in the POWER button (temporarily). Choose MEDIA to switch from the radio to the interface.

Remove and forget the existing bluetooth connection to the car.

Connect the phone to the bluetooth signal of the interface and turn on WIFI.

Test the system with respect to graphics, sound, radio and interface switching, and reverse.

Step 16. Assemble the Interface

Pin the interface. Make sure that the video cable does not kink at the connection point on the interface!



Step 17. Seal the system

Reconnect all parts in reverse order. The system uses the existing microphone.

Step 18. Have fun!



This manual has been compiled on the basis of experience and with due care. No rights can be derived from it. Improvement tips/tricks are of course always welcome!
[\(motrade@kpnmail.nl\)](mailto:motrade@kpnmail.nl)